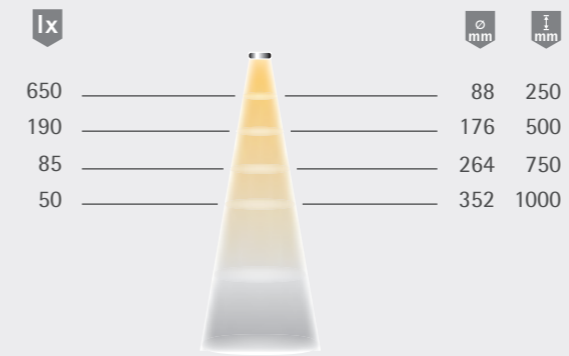
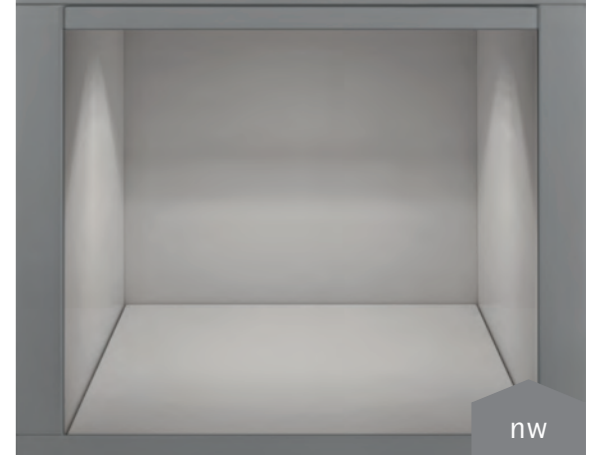




Light distribution diagram 20°



Light box



## LuckyLite Pro

### Advantages

- ▶ Operated by battery, rechargeable via micro USB
- ▶ No need for cables

### Features

- ▶ Tool-free installation
- ▶ Can be retrofitted into furniture
- ▶ Integrated motion sensor

### Examples of use

- ▶ Behind furniture doors

### Order information

- ▶ Including 0.2 m USB charger cable
- ▶ USB chargers must be ordered separately

### LuckyLite Pro

	NeutralWhite
Aluminium look	38 258 26
<b>Accessories*</b>	
USB charger	30 026 01

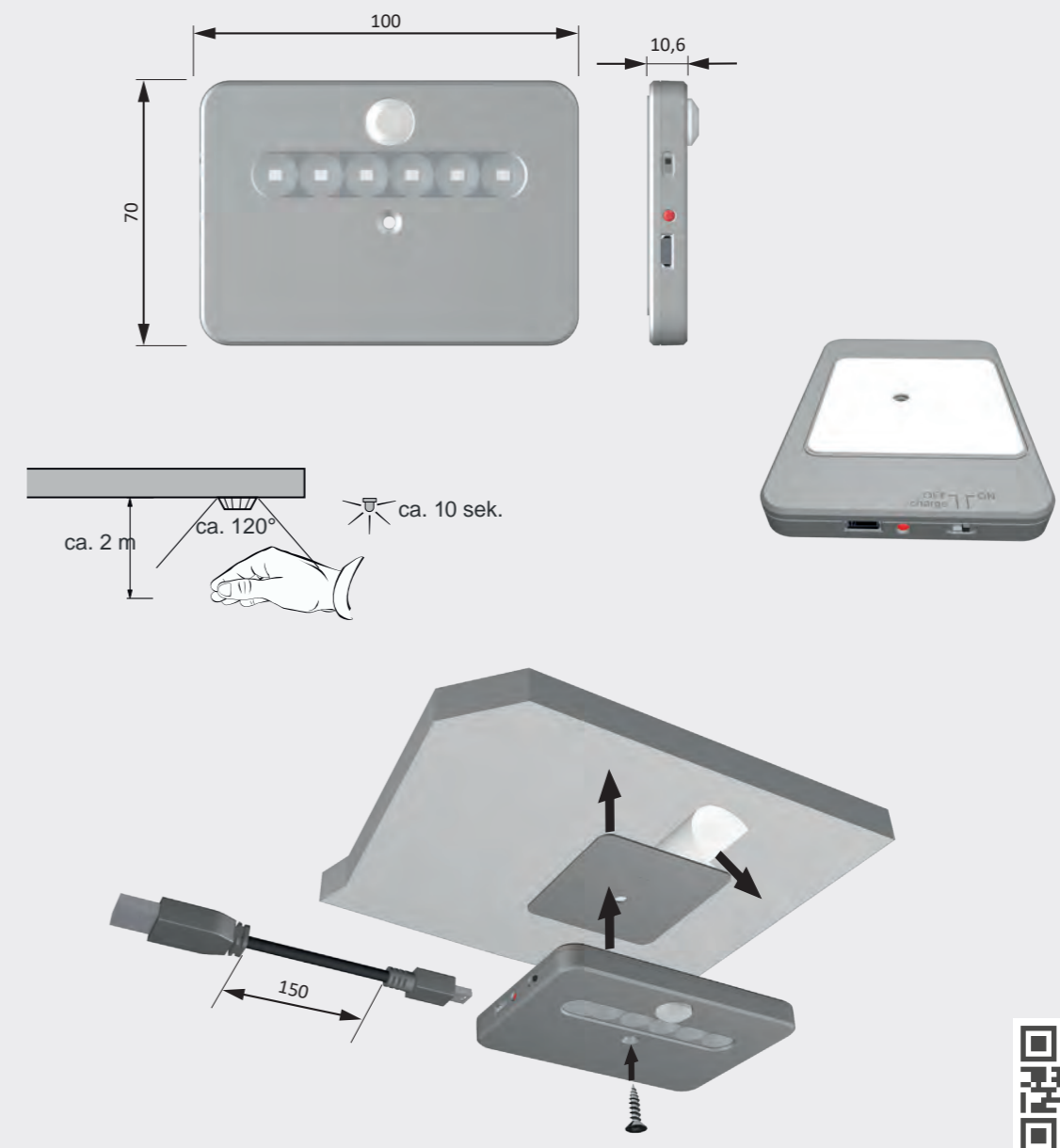
### Technical details



12V

Luminaire type:	Surface-mounted light
Type of lighting:	Accent lighting
Surface finish:	Aluminium look
Light colour:	NeutralWhite
Colour rendering:	RA >80
Luminous flux:	30 lm
Life span:	20,000 h (L70)
Dimmable:	No
Beam angle:	90°
Half value angle:	20°
Test marks and symbols:	CE
Protection rating:	IP 20
Charger connection:	Micro USB
Motion sensor	
Detection angle:	120°
Reach:	2 m
Stay-'ON' time:	10 seconds

### Dimensional drawing / installation



\* Further accessories in section Switch systems/Ballasts and leads