



HV DownLite

Advantages

- ▶ High-voltage LED light
- ▶ Dimmable with L/C type phase or reverse phase dimmers (home installation dimmers)

Features

- ▶ Extremely high light output in relation to size
- ▶ Recessed light with 68 mm installed diameter

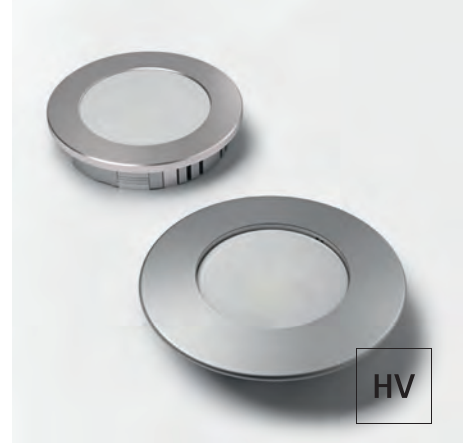
Examples of use

- ▶ Large shelving units and display cabinets
- ▶ Ceiling lighting

Ordering information

- ▶ Version with wire end ferrules must be installed by a qualified electrician
- ▶ Individual lights are supplied without cover ring
- ▶ Sales unit: 1

Technical details in brief




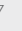


Lamp type: LED recessed light
Type of lighting: Functional lighting
Surface finish: Stainless steel look / aluminium look / white

Operating voltage: 230-240 V AC
Light colour: Warm white / neutral white

Colour rendering index CRI: > 80
Energy efficiency: A+
64 lm / W
Life span: 30,000 h (L70)
Power consumption: max. 5.5 W
Dimmable: Yes (see ordering information)

Beam angle: 60°

Test marks and symbols:    

Protection rating: IP 44 (mounted)
Installed diameter: 68 mm
Supply lead: 2000 mm
Plug connection: HV connector mHV2 / ADE

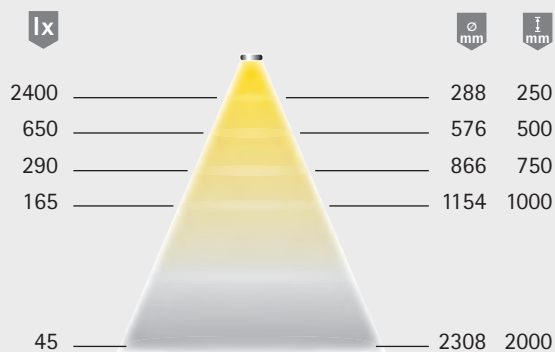
HV DownLite

Article	Order no.	
	Warm white	Neutral white
Individual light - mini HV plug-in system	32 238 16	32 238 06
Individual light - wire end ferrules	32 238 11	32 238 01

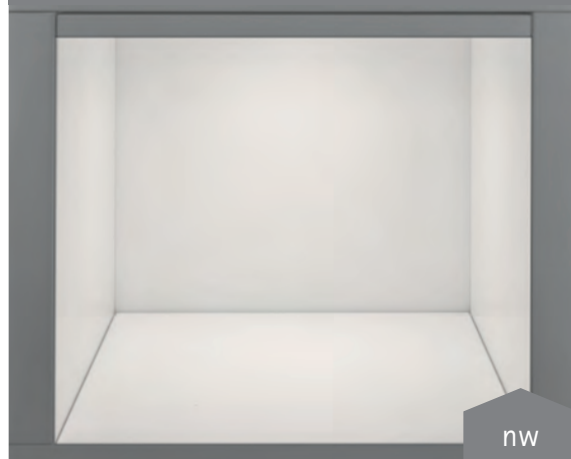
Accessories (for more accessories, see chapters "Switch systems" and "Ballasts & leads")

Article	Order no.
HV DownLite M cover ring 78 mm - aluminium look	25 399 06
HV DownLite M cover ring 78 mm - white	25 399 01
HV DownLite M cover ring 78 mm - stainless steel look	25 399 09
HV DownLite L cover ring 92 mm - aluminium look	25 395 06
HV DownLite L cover ring 92 mm - white	25 395 01
HV feeder with mHV2 plug-in system - white	36 322 01
HV extension cable with mHV2 plug-in system - white	36 321 01
HV 6-way distributor with mHV2 plug-in system - white	36 323 01

Light distribution diagram / 60°



Light box



Dimensional drawing / installation

