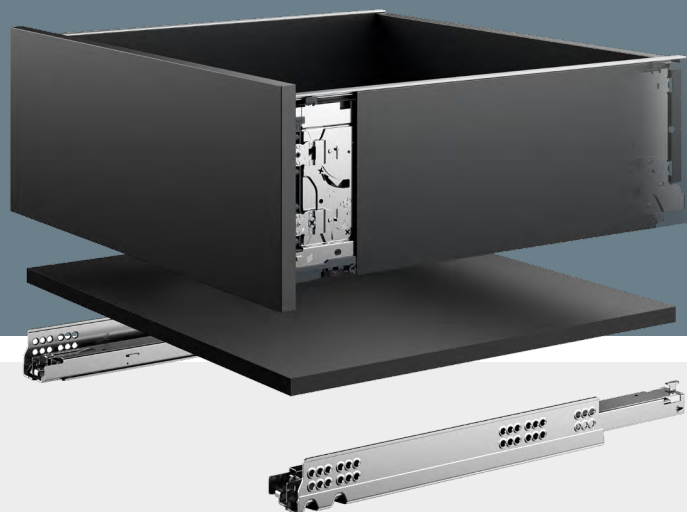


# Installation of starter set AvanTech YOU double walled drawer system

Promotion effective until:

Fascinated by solutions.  
We call it

## Fascin[action]

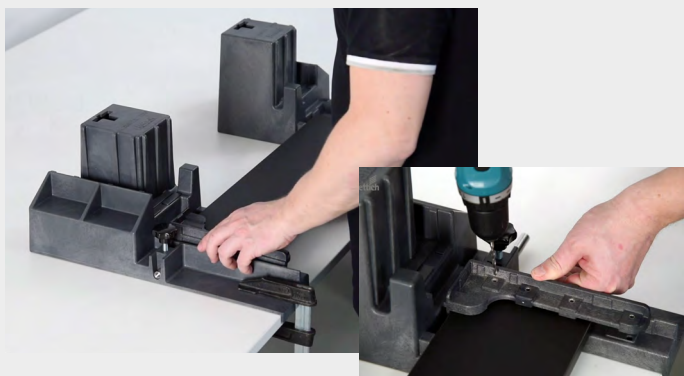


**Drawer assembly made easy:**  
With our starter set you can start working immediately.

In only 3 steps you have everything in the box.  
We can do it in 2 minutes, and you?

### Step 1

Position and pre-drill the rear panel.



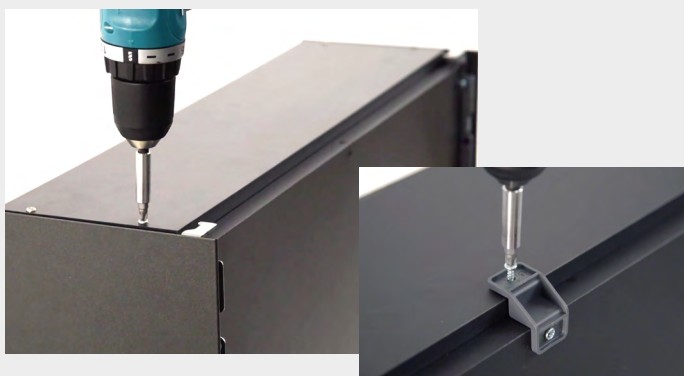
### Step 2

Place and fix the drawer side profiles and bottom panel.



### Step 3

Insert and screw profiles to the rear panel.



**The AvanTech YOU is ready.**

Starter set AvanTech YOU  
It's as easy as this.

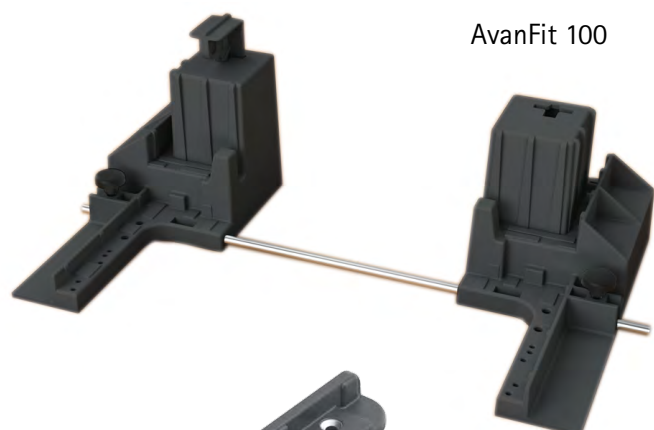


The assembly animation can be found here:  
<https://www.hettich.com/short/32750b>

# AvanTech YOU double walled drawer system

## ► Installation of starter set

### Installation of starter set AvanTech YOU



AvanFit 100

The set consists of

- AvanFit 100
- Practica 275 (rear panel)
- Practica 250 (front panel)
- Centring drill bit for Practica 250

Order no.	Order no. Hettich	Price €* / set	PU
	9 285 179		1 set



Practica 275

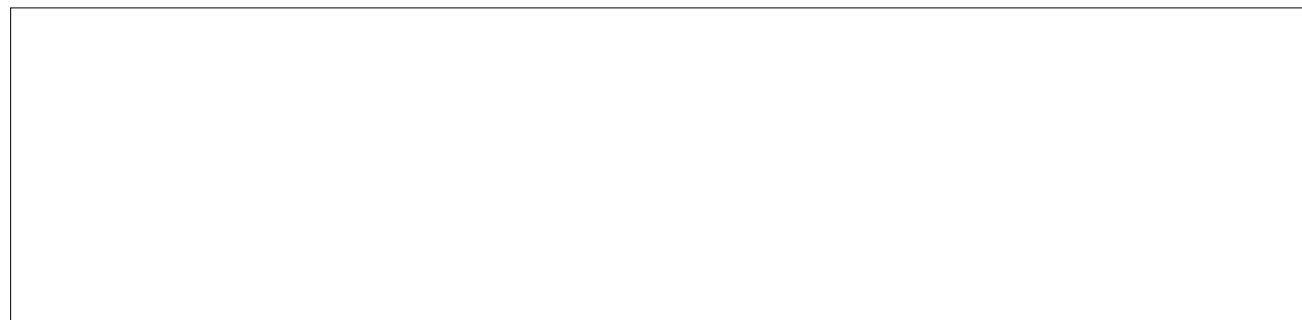


Practica 250



Centring drill bit

\*Manufacturer's recommended price. Prices apply to the purchase of full packaging units and do not include VAT.



2001-003\_Avt-Y\_Vrtbg\_AFlyer\_04/20\_HMW/de  
© Hettich Marketing- und Vertriebs GmbH & Co. KG  
Subject to technical modifications.